

VSMC



London Array Marine Coordinator
+44(0) 792 08 54 358
+44(0) 791 88 81 811
londonarraytraffic@dongenergy.dk

Visser & Smit Marine Contracting
Stationspark 450-480
3364 DA Sliedrecht
The Netherlands
Tel. +31(0)184606191
www.vsmc.nl

January 16th, 2012

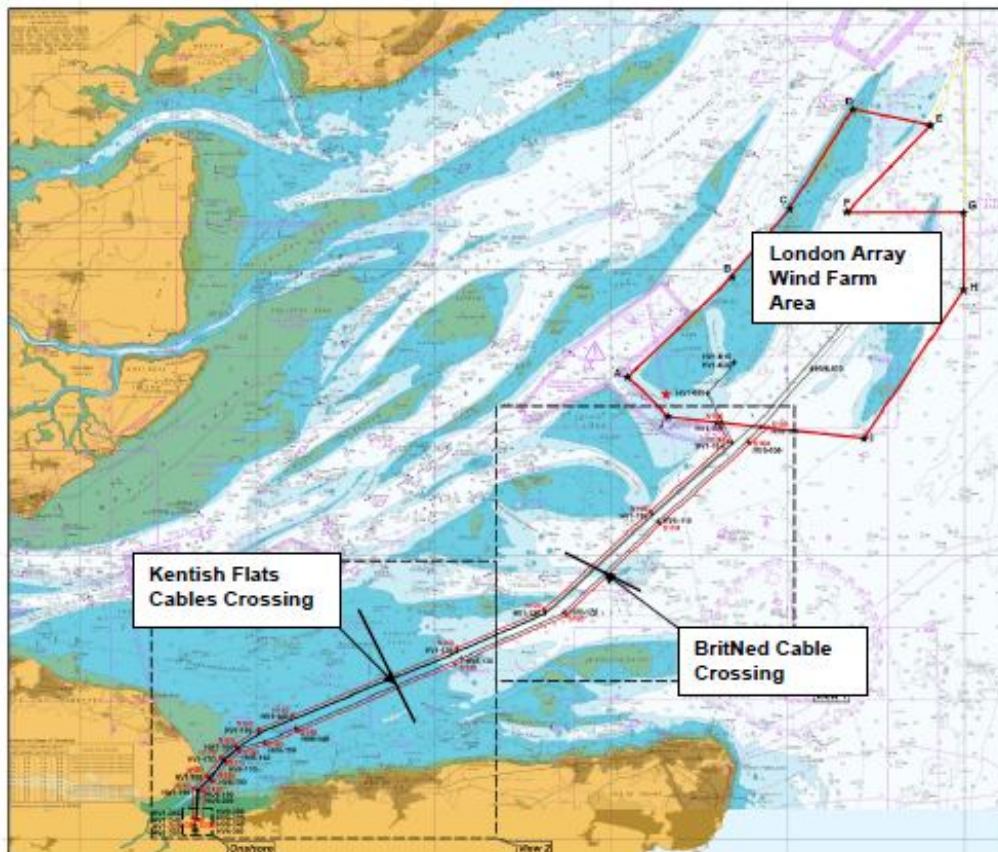
NOTICE TO MARINERS

ROCK BERMS INSTALLED AT THE KENTISH FLATS AND BRITNED CABLE CROSSINGS

Clearance at Kentish Flats: -1.5m LAT

Notice is hereby given that VSMC have had Van Oord Offshore BV install rock berms at the Kentish Flats and BritNed cable crossings in order to protect the surface-laid part of the High Voltage Export Cable #2 (HV2) of the London Array Windfarm project.

The following figure shows an overview of the project area.



Overview of Project Area

THE KENTISH FLATS CABLE CROSSINGS (N51°25'13'', E 1°06'02')

At these three crossings the typical seabed level was -4m LAT. Due to the newly installed rock berm the depth in some areas is now -1.5m LAT.

The start and end coordinates of the rock berm are given in the following table.

CROSSING		EASTING	NORTHING	LATITUDE	LONGITUDE
Kentish Flats	from	367769.05	5698254.77	N 51°25'12.22045''	E 1°05'53.70822''
	to	368088.74	5698335.72	N 51°25'15.10756''	E 1°06'10.14202''
<i>WGS84 - UTM Zone: 31N</i>					

THE BRITNED CABLE CROSSING (N 51°28'35'', E 1°17'25')

At this crossing the seabed level varies from -6.5m LAT to -9m LAT. Due to the newly installed rock berm the depth in some areas is now -4m LAT.

The start and end coordinates of the rock berm are given in the following table.

CROSSING		EASTING	NORTHING	LATITUDE	LONGITUDE
BritNed	from	381212.69	5704127.66	N 51°28'32.96062''	E 1°17'22.30652''
	to	381313.32	5704217.47	N 51°28'35.94255''	E 1°17'27.41186''
<i>WGS84 - UTM Zone: 31N</i>					

This Notice to Mariners has been provided by:

VSMC



Visser & Smit Marine Contracting

Stationspark 450-480
3364 DA Sliedrecht
The Netherlands
Tel. +31(0)184606191
www.vsmc.nl