



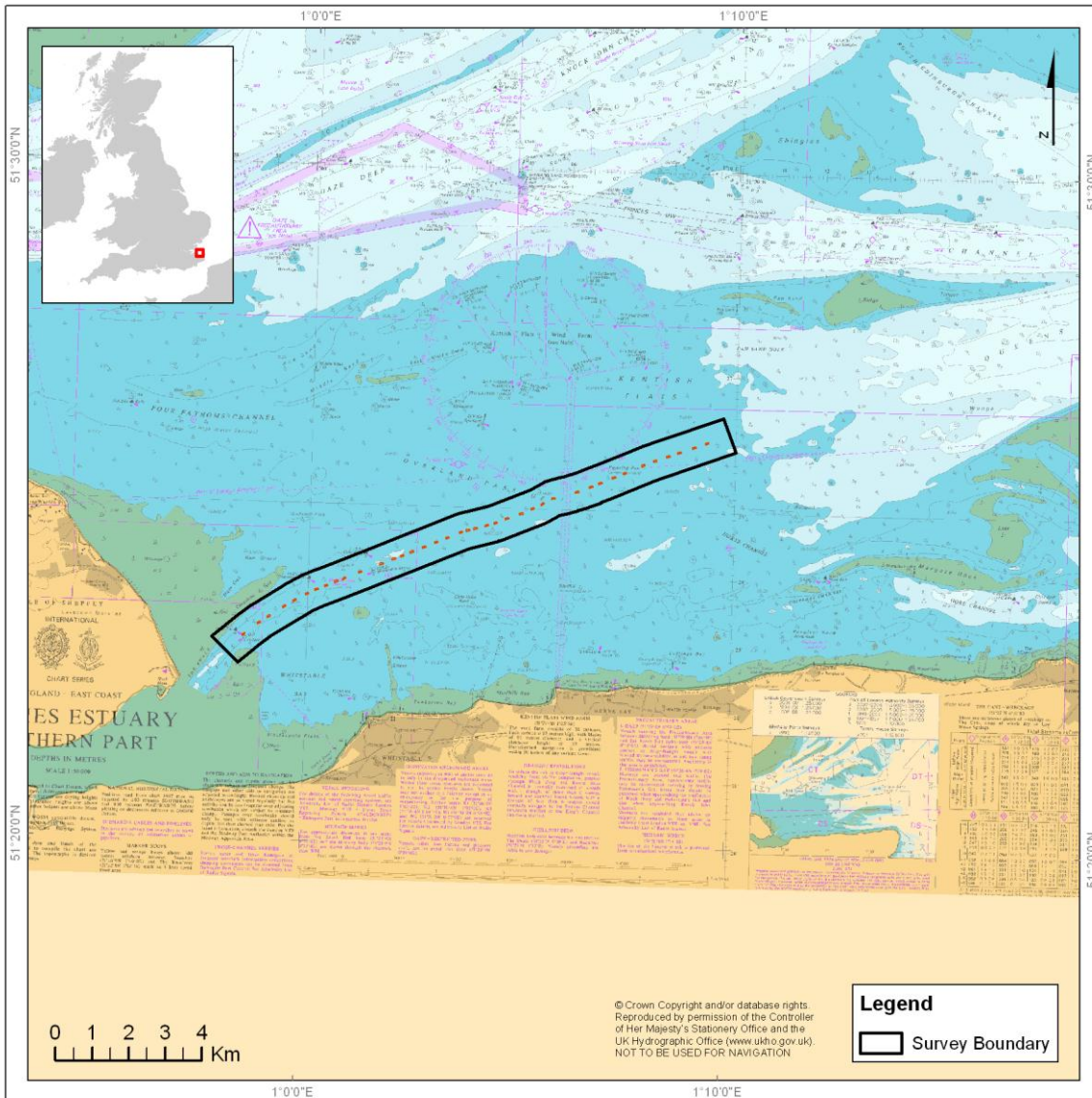
**EMU Limited**  
Head Office  
1 Mill Court  
The Sawmills  
Durley  
Hampshire  
SO32 2EJ  
Tel.: (01489) 860050  
Fax: (01489) 860051

Notice is hereby given that EMU Limited will be conducting a geophysical survey as detailed below.

### 1. Survey locations

Figure 1 shows the extents of the survey area in the Swale/Thames Estuary.

**Figure 1 Survey extents**



Survey operations within will be conducted within the areas defined by the coordinates in Table 1.

WGS 84 (degrees decimal-minutes)	
Lat	Long
0° 58.515' E	51° 22.479' N
1° 0.278' E	51° 23.312' N
1° 10.225' E	51° 25.818' N
1° 9.825' E	51° 26.526' N

**Table 1          Coordinates of survey areas**

**2.      Vessel**

*Yantlet* (13 m vessel) will be conducting bathymetric and geophysical survey using hull mounted and towed acoustic equipment. The vessel will be operating on a 24 hour basis. Throughout survey operations, the vessel will be displaying the appropriate lights and shapes as required under the COLREGS Rule 27 (b) and will require other vessels to maintain a wide berth of at least 100 m.

**3.      Work schedule**

The proposed work schedule is shown in Table 2.

Vessel	Anticipated minimum number of days on site	Earliest start date	Latest stop date
<i>Yantlet</i>	4	9/01/2012	17/01/2012

**Table 2          Proposed work schedule**

**4.      Purpose of survey**

Survey in support of LAL Export Cable Laying Operations (HV3).